



Advancing Wind Power in Illinois Conference 2011

Brad Lystra

American Wind Energy Association

**Wind Energy Policy in Illinois
Breakout Session**

Friday, July 22, 2011, 11:15 AM



Illinois State Policy

Brad Lystra
Manager of State Campaigns
American Wind Energy Association

American Wind Energy Association

AWEA is the trade association for the wind energy industry

- **2,500 business members including manufacturers, developers, transportation, utilities, construction, insurers, financial community and technical support and forecasting representing 75,000 wind jobs**
- **Develops policies and conducts analysis to support wind industry growth**
- **Execute wind industry's legislative agenda**
- **Promotes wind energy through advocacy, advertising and media relations**
- **Convenes conferences and workshops to educate the public and bring industry members together.**

www.PowerofWind.com www.awea.org

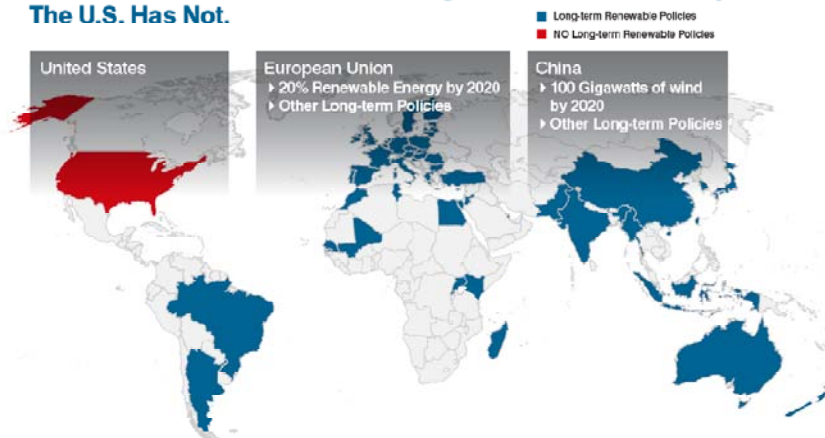


Building Friendships

1. Advertising
2. Champions
3. Coalitions
4. Event Participation
5. Fundraising
6. Lobbyists and Consultants
7. Messaging and Talking Points
8. Surveys and Polls
9. Press and Media

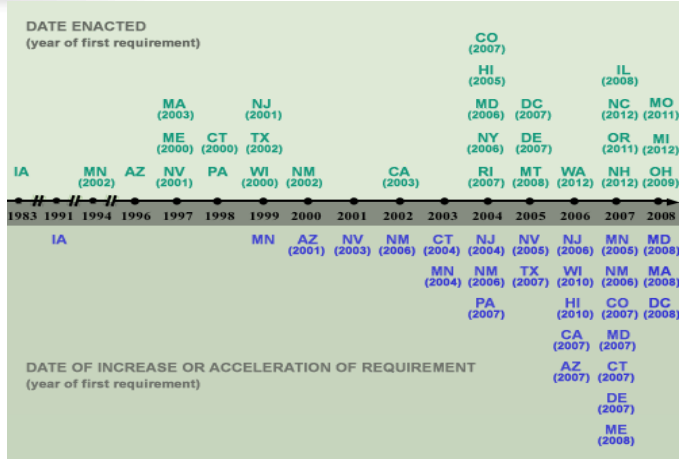
State of policy environment

**37 Other Nations Have Enacted Long-term Renewable Policy.
The U.S. Has Not.**



Portfolio Approach: State & Regional Leadership

States with Renewable Portfolio Standards have created a market for wind with over 90% of renewable energy built in states with RPS requirements and goals.

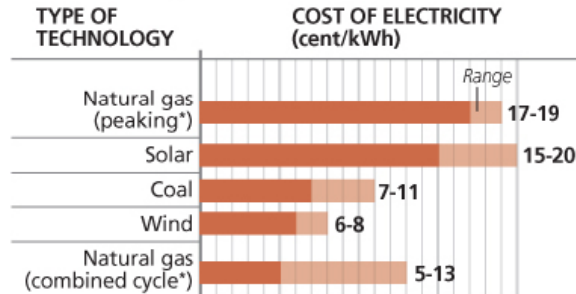


Recent costs of affordable wind energy

- The Illinois Power Agency competitive auction in mid-2010 for the procurement of 20-year bundled power purchase agreements (PPAs) for ComEd and Ameren-Illinois consumers.
- The contracts are set to commence delivery on June 1, 2012.

Quantity (kWh)	Average Cost (cents/kWh)
Ameren 600,000,000	5 cents
ComEd 1,261,725,000	5.5 cents

Organization: CPS
 Topic/Report: News Article
 Year Released: 2010



* Peaking natural gas plants are only run on the hottest days, during the hottest part of the day, when demand is highest. Combined cycle natural gas plants run more frequently, and therefore at a lower cost.

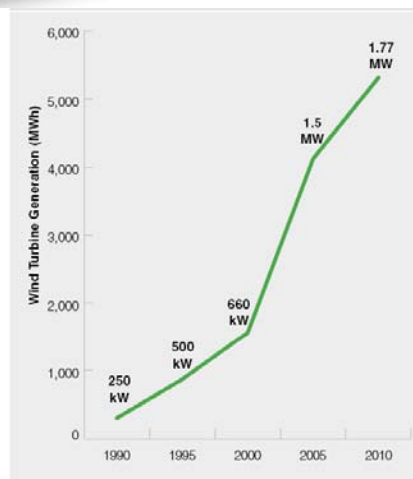
Source: CPS Energy

EXPRESS-NEWS GRAPHIC

Chart Source: CPS Energy, 10/26/2010
http://www.mysanantonio.com/news/local_news/wind_power_costs_released_105744808.html

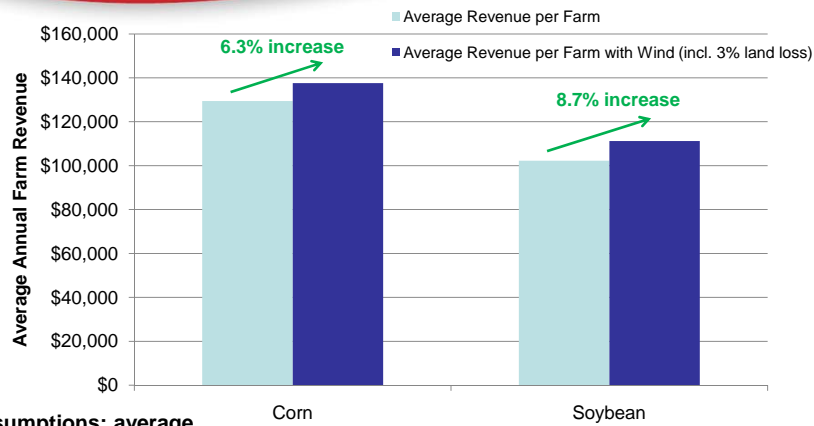
Wind turbine productivity is increasing, costs are decreasing.

- Turbines' availability to generate is usually above 98%
- Taller towers and better siting technology have enabled project owners to achieve capacity factors in the high 30% and low 40% annually in the best wind resource areas



Source: AWEA, U.S. Wind Industry Annual Market Report Year Ending 2010

Wind: A Midwest Cash Crop based on 2010 ACRE Program guarantee prices & 242 acre average farm size in IN



Wind Assumptions: average revenue of \$3,000 per MW installed and 60 acres per MW

Wind Power: America's & Indiana's Choice Hoosiers overwhelmingly support renewable energy.

- 600 registered Hoosiers voters were polled in February 2011
- 77% of Indianans believe it is important for Indiana to have a renewable energy requirement. Support for the proposal cut across gender, age, education, partisan and geographic lines in the state



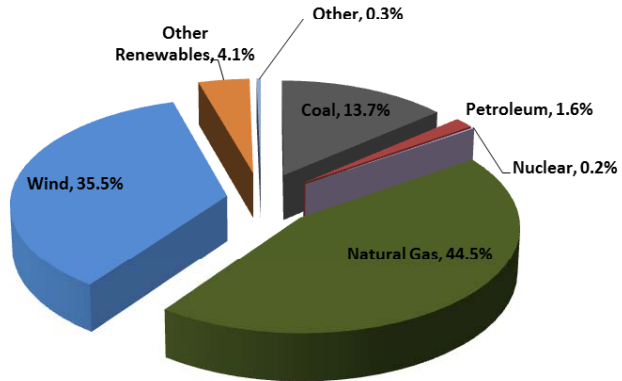
- 84% supported the development of more wind projects in the state over the next two years

Wind has captured 35% of all new generating capacity in America since 2007.

Nearly 81,000 MW of new generating capacity installed between 2007 and 2010.

Wind installed over 35% of all new generating capacity between 2007 and 2011, over 29,000 MW.

Percent of New Installed Capacity, 2007-2010

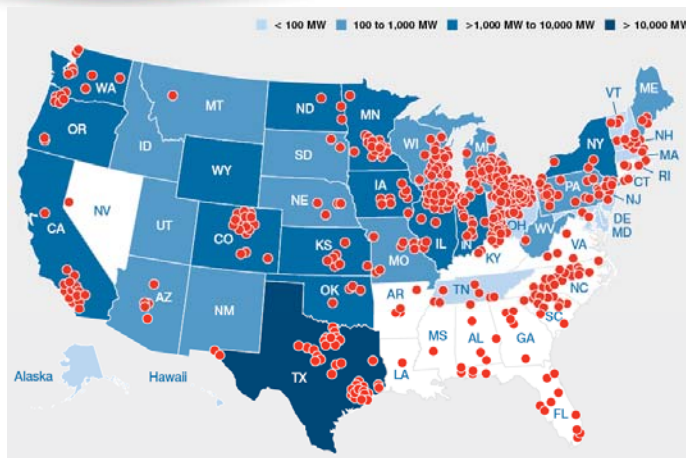


Source: AWEA, EIA, SEIA, SNL



7

With 400 facilities, wind is one of the fastest-growing sources of U.S. manufacturing jobs.



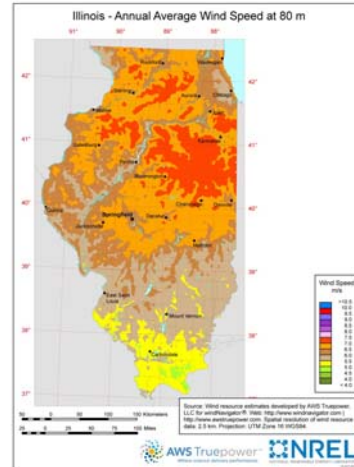
Source: AWEA, U.S. Wind Industry Annual Market Report Year Ending 2010



8

Illinois Impacts

- Wind generated over \$6 million in 2010 landowner payments.
- Wind generated over \$15 million in 2010 local government property tax payments.
- Wind supports 5,000-10,000 jobs in Illinois.



Source: National Renewable Electricity Laboratory

Please join us at one of AWEA's upcoming workshops!

Fall 2011

AWEA Wind Power Supply Chain Workshop
September 12 – 13, 2011 | Des Moines, IA

AWEA Small and Community WINDPOWER 2011 Conference & Exhibition
September 15 – 17, 2011 | Des Moines, IA

AWEA OFFSHORE WINDPOWER 2011 Conference & Exhibition
October 11 – 13, 2011 | Baltimore, MD

AWEA Wind Energy Fall Symposium
November 2 – 4, 2011 | Carlsbad, CA

AWEA Wind Resource & Project Energy Assessment Workshop
December 14 – 15, 2011 | Seattle, WA

Spring 2012

AWEA Wind Power Health & Safety Workshop
January 9 – 10, 2012 | San Diego, CA

AWEA Wind Project Performance & Reliability Workshop
January 10 – 11, 2012 | San Diego, CA

AWEA Wind Power on Capitol Hill
February 7 – 8, 2012 | Washington, DC

AWEA Wind & Transmission Workshop
February 15 – 16, 2012 | Indianapolis, IN

AWEA Wind Power Project Siting Workshop
February 28 – 29, 2012 | Las Vegas, NV

AWEA Wind Power Supply Chain Workshop
March 6 – 7, 2012 | Chicago, IL

AWEA Wind Power Finance & Investment Workshop
April 12 – 13, 2012 | New York, NY

WINDPOWER® 2012
June 3 – 6, 2012 | Atlanta, GA